

Ceiling-mounted profiles Specification

AS-NNR18VCC-1000

AS-NNR18VCC-2500

AS-NNR18VCC-XX-2

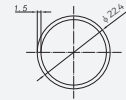
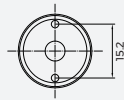
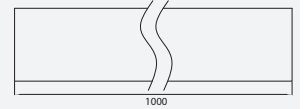
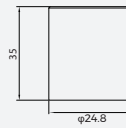
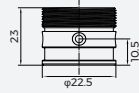
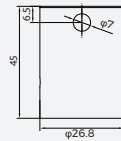
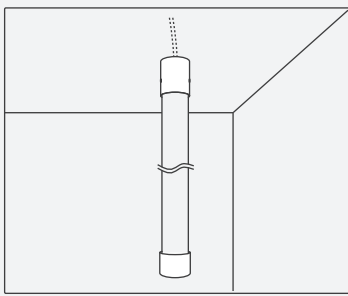


【Features】

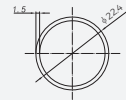
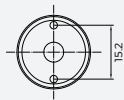
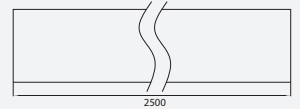
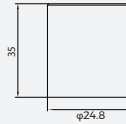
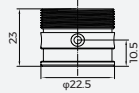
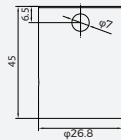
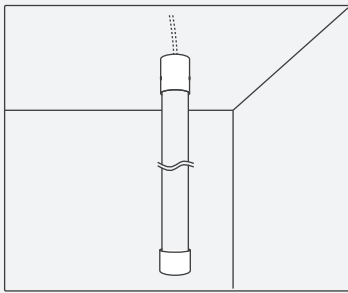
- Material: aluminum;
- Operating environment: indoor;
- Installation: screw flat mounting;
- Warranty: 6 years.

【Mechanical Parameter】

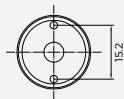
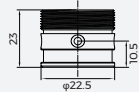
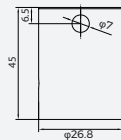
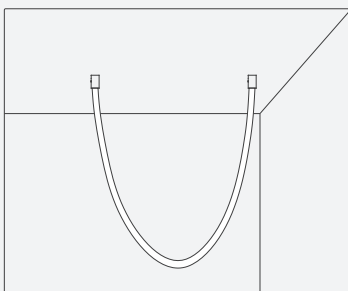
AS-NNR18VCC-1000



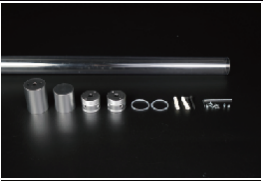


AS-NNR18VCC-2500



AS-NNR18VCC-XX-2



【Specification information】

Describe	Accessories Picture	Order model	Quantity/ case (PCS)	Net weight (kg)	Per box net weight (kg)	Gross weight (kg)	Packages (mm)	Range of applications
Single-ended vertical ceiling Install accessory kit (1m)		AS-NNR18VCC-1000	23	0.14	3.22	4.11	1285*160*160	suit to:NNR18
Single-ended vertical ceiling Install accessory kit (2.5m)		AS-NNR18VCC-2500	28	0.28	7.84	9.56	2580*165*165	suit to:NNR18
Double-ended vertical ceiling Kits		AS-NNR18VCC-XX-2	48	0.16	7.68	8.28	365*365*190	suit to:NNR18

【Precautions】

- Do not use any acid or alkaline adhesive to fix products(including not limited to glass cement,etc).
- After the installation of the lamps and lanterns is completed, do not pull violently, to avoid damage to the lamp.
- Maximum lifting weight of accessories is 4kg(No more than 4 meters).
- Welding of wires and plate must be done in a dry environment.